



**MOSQUITO and VECTOR MANAGEMENT DISTRICT
of SANTA BARBARA COUNTY**

DISEASE SURVEILLANCE REPORT

March 2025

Santa Barbara County Vector-borne Disease Surveillance

Seven dead birds from Santa Barbara County were reported to the state hotline in March. Samples were collected from three birds. The samples were sent for testing, and the results are pending. There have been no detections of West Nile virus (WNV) in the County in 2025. St. Louis encephalitis virus (SLE) and Western equine encephalitis virus (WEE) have never been documented in the County.

The District trapped 33 mosquitoes in 12 traps March 24-35, 2025 at the Oceano Dunes Recreation Area in San Luis Obispo County. One sample will be sent to the Davis Arbovirus Research and Training Lab (DART) to test for WNV, SLE, and WEE.

Tick Surveillance

Date	Location	<i>Ixodes pacificus</i> (Black-legged tick)		<i>Dermacentor occidentalis</i> (Pacific coast tick)		<i>Dermacentor similis</i> (Western American dog tick)		Total # of Ticks Collected
		Male	Female	Male	Female	Male	Female	
3/7	Toro Canyon Gazebo Trail, 93013	2	1	13	14	0	0	30
3/10	Romero Canyon Trail, 93108	12	11	13	9	0	0	45
3/18	Franklin Trail, 93013	8	7	7	12	0	0	34
3/19	Toro Canyon Ridge Trail, 93013	20	20	7	4	0	0	51
3/20	2400-2500 Whitney Ave, Summerland hillside	0	7	3	5	0	0	15

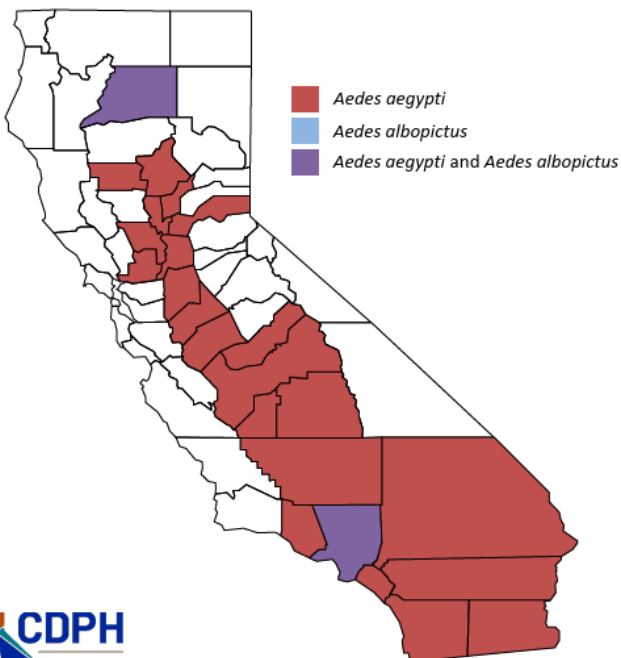
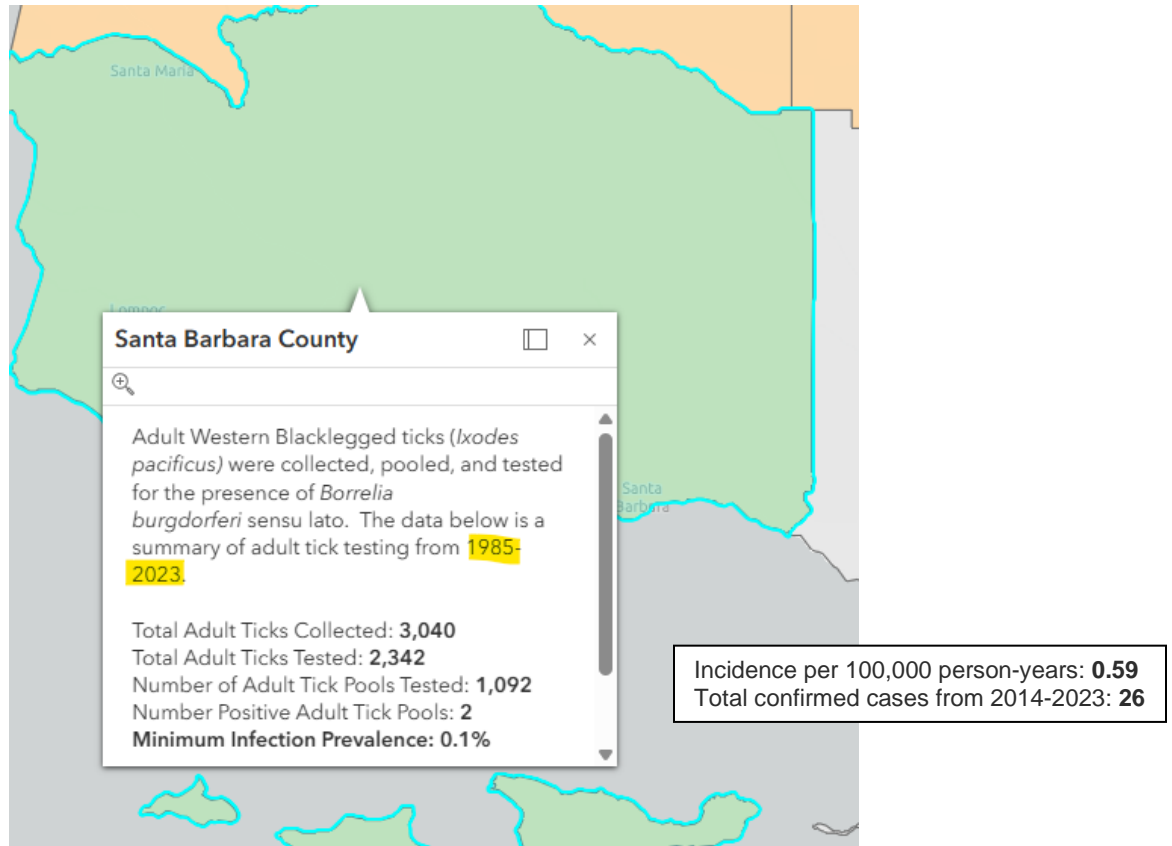
Each site was flagged by one person for 30 minutes.

Visit <https://www.mvmdistrict.org/tick-talk> for an explanation of tick flagging and more information about ticks.

California Vector-borne Disease Surveillance

Weekly arbovirus bulletins from the California Department of Health (CDPH) have not yet started for the 2025 season. Thirty-two counties reported samples positive for West Nile virus in 2024.

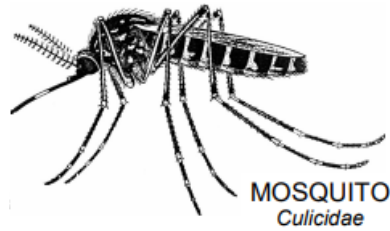
The CDPH has created a website with Lyme disease (*Borrelia burgdorferi*) information and interactive maps: <https://storymaps.arcgis.com/stories/f64d0c19a3ab42cf90e8ce38397e96e0>



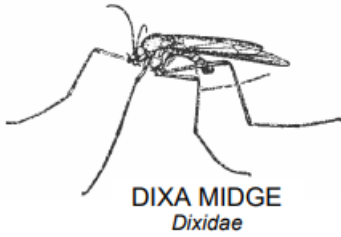
Update on Invasive *Aedes* Mosquito in California

No invasive *Aedes* species have been detected in Santa Barbara County since May 2021. *Aedes aegypti* is found in 24 California counties, and *Aedes albopictus* is found in two (reduced from five).

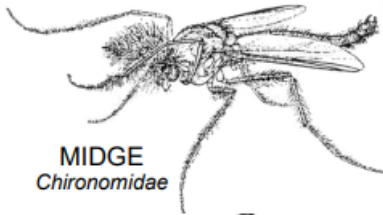
In 2024, there were **18** locally-transmitted cases of dengue virus in California: Los Angeles County (12), San Bernardino County (1), and San Diego County (4). Non-native *Aedes* mosquitoes, capable of vectoring dengue, Zika, chikungunya, and yellow fever viruses, are common in the Greater Los Angeles area. As of March 1, 2025, there have been 10 travel-related human dengue cases in California; there has been one travel-related case of chikungunya virus and zero cases of Zika virus. There were five cases of travel-related dengue in Santa Barbara County last year. Worldwide, the number of dengue cases more than doubled—6.5 million in 2023 to 14 million in 2024 (10,000 deaths).



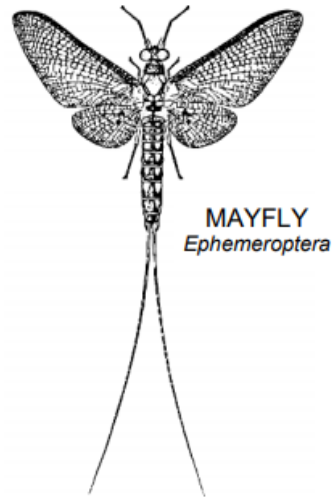
MOSQUITO
Culicidae



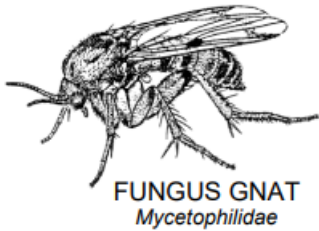
DIXIA MIDGE
Dixidae



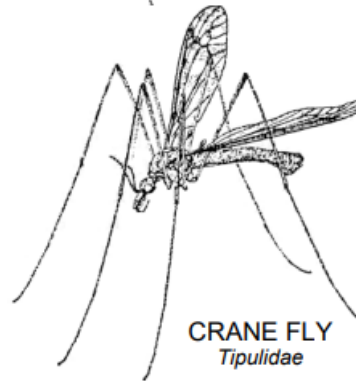
MIDGE
Chironomidae



MAYFLY
Ephemeroptera

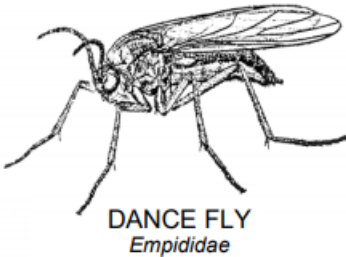


FUNGUS GNAT
Mycetophilidae

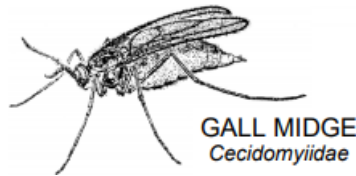


CRANE FLY
Tipulidae

Note: "Mosquito hawks"
do not eat mosquitoes



DANCE FLY
Empididae



GALL MIDGE
Cecidomyiidae



OWL MIDGE / MOTH FLY
Psychodidae

Mosquito Look-alikes

Non-biting insects that resemble mosquitoes are present in Santa Barbara County at various times and places throughout the year. Most types are attracted to lights at night. They resemble mosquitoes so closely that they are frequently reported to the District as being mosquitoes, even if there has been no bite or attempt to bite. Mosquitoes do not "swarm" as many of these other insects do. Also, on surfaces, mosquitoes can take slow steps, but they do not run. Under magnification, these non-biting insects are easily distinguished from mosquitoes by the absence of the proboscis (long, needle-like mouth parts).