

Bedbug



Black Widow Spider



Black Fly or No-See-Um

### ***What Services Does the Mosquito and Vector Management District Provide?***

- Can inspect your property for rats and mice free of charge and give specific control recommendations.
- Control of nuisance and disease-carrying mosquitoes on public and private land including creeks, flood control basins, and wetlands.
- Provide free Mosquito Fish for your ornamental garden pond or animal watering trough.
- Provide a list of beekeepers that will remove bees alive, without destroying the colony.
- Provide information on bee-proofing your house and yard to prevent bees from taking up residence on your property.
- Conducts surveillance for vector-borne diseases including West Nile Virus, Encephalitis, Hantavirus, Arenavirus, Lyme Disease, and Bubonic Plague.
- Identification of insects that are of public health concern.
- Is available as a source of information on vectors and vector control issues. The District maintains a public information website and over 30 different public information brochures regarding vectors and vector-borne diseases of local interest.

*For Service or More Information Call:*

### **MOSQUITO and VECTOR MANAGEMENT DISTRICT of SANTA BARBARA COUNTY**

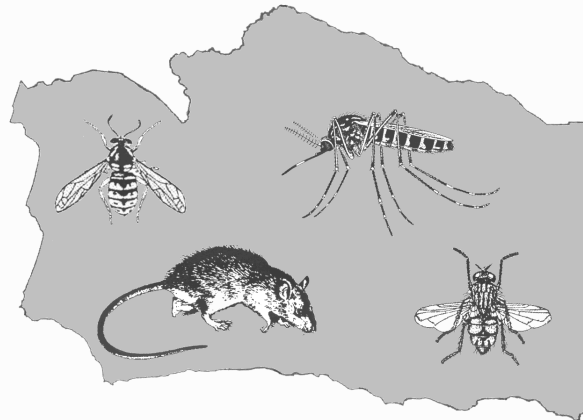
OFFICE: 2450 Lillie Ave. \* MAIL: P.O. Box 1389  
Summerland, CA 93067

**TELEPHONE: (805) 969-5050**

E-MAIL: [mvmdistrict@mvmdistrict.org](mailto:mvmdistrict@mvmdistrict.org)

Visit our WEBSITE: [www.mvmdistrict.org](http://www.mvmdistrict.org)

## **Services provided by the MOSQUITO and VECTOR MANAGEMENT DISTRICT of SANTA BARBARA COUNTY**



***An Independent Public  
Health Special District  
Serving Your Community.***

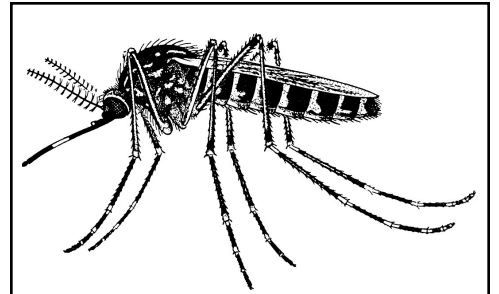


### ***What is a Vector?***

Vectors are animals or insects such as rats, mice, mosquitoes, ticks, bees, wasps, and flies that can transmit diseases or cause illness or discomfort to humans, pets, or livestock.

### ***What is the Mosquito and Vector Management District of Santa Barbara County?***

Formerly named the Santa Barbara Coastal Vector Control District, the Mosquito and Vector Management District of Santa Barbara County is a local government agency whose mission is to protect the public's health and safety from vectors and vector-borne diseases. The Mosquito & Vector Management District is an independent local government agency called a **Special District**. Special districts are **NOT** county, city, state, or federal government departments, but are community based local government agencies. The Mosquito & Vector Management District is a tax supported agency and is governed by a Board of Trustees who are also residents of the District.



**ENCEPHALITIS MOSQUITO (*Culex tarsalis*)**  
A Common Local Species and a Known Vector of Mosquito-Borne Viruses.

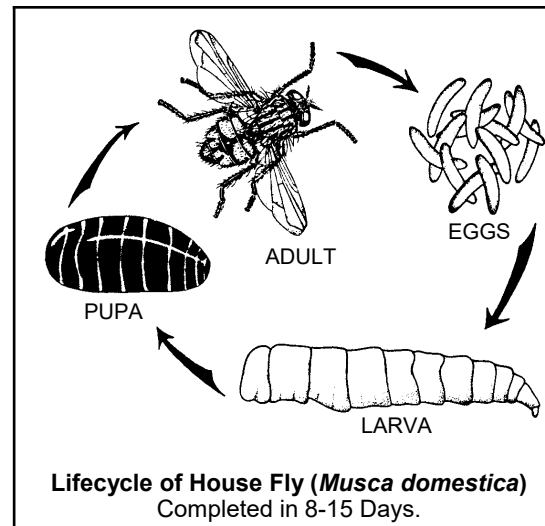
### ***Where Does the Mosquito and Vector Management District Currently Provide Service?***

The Mosquito and Vector Management District serves all unincorporated areas of Santa Barbara County. However, **the full services described here are limited to the enhanced service areas listed below that already pay a benefit assessment:**

- |                         |                       |
|-------------------------|-----------------------|
| • Goleta Valley         | • Winchester Canyon   |
| • City of Goleta        | • Ellwood             |
| • City of Santa Barbara | • Isla Vista          |
| • Santa Barbara Airport | • UCSB                |
| • Hope Ranch            | • Montecito           |
| • Mission Canyon        | • Summerland          |
| • Rancho Embarcadero    | • Carpinteria Valley  |
| • El Encanto Heights    | • City of Carpinteria |

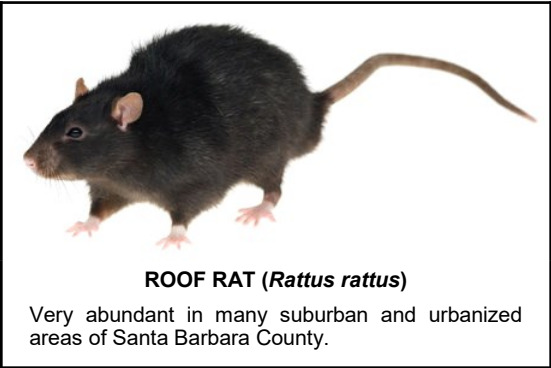
### ***How Long Has the Mosquito and Vector Management District Served These Areas?***

The Mosquito and Vector Management District and its predecessors have provided mosquito control in the Carpinteria Valley since 1936 and in the Goleta Valley since 1959. In 1993, the District became a full service vector management district that now provides the entire range of vector management services. The District annexed the remaining unincorporated portions of Santa Barbara County in 2002 and the City of Santa Barbara in 2004.



SERVICES PROVIDED BY THE MOSQUITO AND VECTOR MANAGEMENT DISTRICT OF SANTA BARBARA COUNTY

RAT & MOUSE CONTROL



Rats and Mice can:

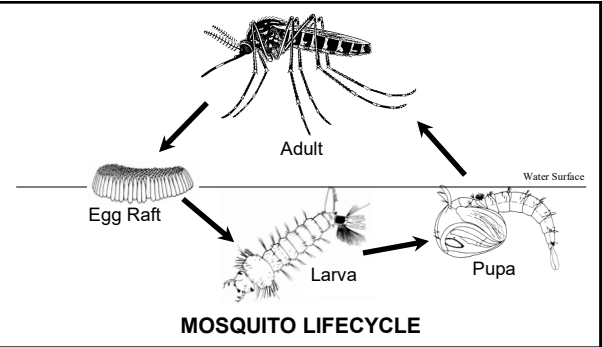
- Carry and transmit diseases such as Hantavirus, Arenavirus, Bubonic Plague, Murine Typhus, Leptospirosis, and Salmonella.
- Carry fleas and mites that can vector disease and cause irritation to humans.
- Consume food meant for human consumption.
- Contaminate stored food and the interior of buildings with urine and feces.
- Damage structures, furniture, electrical lines, water hoses, vehicles, etc. by gnawing.
- Unnerve humans with their presence.

What the Mosquito and Vector Management District can do to help:

- Inspect your house and yard.
- Make specific control recommendations including rodent-proofing and sanitation measures that will make your property less attractive to rodents.
- Provide pamphlets and information about rodents.
- Survey your neighborhood for other properties with rodent problems.
- Arrange for a speaker at community, neighborhood, association, and civic organization meetings.
- Assist schools, businesses, and public agencies.

All of these services are provided free of charge to residents of the District's Enhanced Services Areas.

MOSQUITO CONTROL



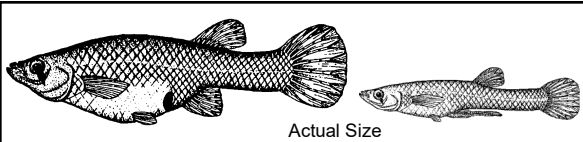
Santa Barbara County has many acres of mosquito breeding habitat including coastal salt marshes, seasonal wetlands, creeks, rivers, lakes, ponds, lagoons, ditches, gutters, and storm drains, as well as “backyard” breeding sources.

Mosquitoes can:

- Potentially transmit diseases such as West Nile Virus, Encephalitis, Malaria, and Dog Heartworm.
- Cause serious nuisance problems with their biting.
- Breed in any stagnant water source that stands for more than a week (mosquitoes may grow from egg to adult in as little as 10 days).

The Mosquito and Vector Management District controls mosquitoes with:

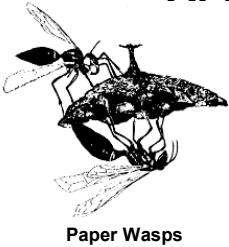
- Physical Control - elimination of breeding sources.
- Biological Control using Mosquito Fish (*Gambusia affinis*) that eat mosquito larvae.
- Chemical Control of immature stages with environmentally friendly pesticides such as BTI (a biological toxin), Altosid (an insect growth regulator), and surfactants that break the surface tension of water.



Fish Prevent Mosquitoes

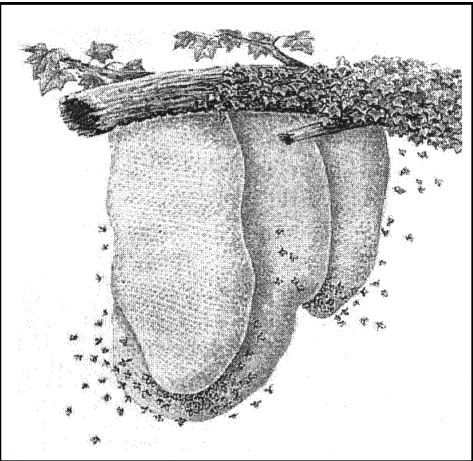
Mosquito Fish (*Gambusia affinis*) are provided free of charge to residents living in the District. These fish have a huge appetite for mosquito larvae and provide long-term control in permanent and semi-permanent mosquito breeding sources including ornamental ponds, animal watering troughs, and unused swimming pools.

AFRICANIZED HONEY BEE & WASP CONTROL



The Mosquito and Vector Management District can provide the following services:

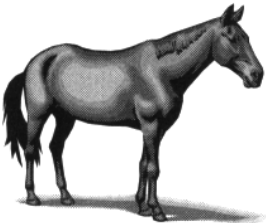
- Provide a list of local beekeepers that can remove bees alive.
- Provide information on bee-proofing your house and yard to prevent bees from taking up residence on your property.



DISEASE SURVEILLANCE

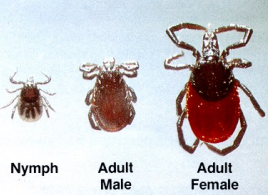
West Nile Virus & Encephalitis

Three techniques are used to detect West Nile Virus and other mosquito-borne viruses: sentinel chicken flocks, trapping live mosquitoes, and testing of dead wild birds.



Horses are also frequent victims of West Nile Virus and Encephalitis.

Lyme Disease



WESTERN BLACK-LEGGED TICK

Ticks that are capable of transmitting Lyme Disease are found in Santa Barbara County. The District collects live ticks and has them tested for the presence of Lyme Disease.

Hantavirus & Arenavirus

Hantavirus and Arenavirus are potentially deadly to humans. Both are found in Santa Barbara County. The District conducts surveillance for these rodent-borne viruses to better understand the distribution and biology of the diseases.



CALIFORNIA GROUND SQUIRREL (*Spermophilus beecheyi*)  
The primary reservoir of Plague.



Bubonic Plague is endemic in Santa Barbara County foothill and mountain areas. In 1996, a Plague positive Coyote was found in the Goleta foothills. The District routinely surveys local ground squirrel populations for Plague.

Bubonic Plague